

catchon

An **ENA** Affiliate

What is CatchOn?

CatchOn is an administrative tool that provides district technology leaders up-to-the-minute data on all apps, software, and website activity. The solution's dashboards and reports provide 100% visibility of activity on all devices, enabling administrative leaders to assess the success of technology initiatives and prescribe professional development based on the data.

- Collect up-to-minute data on every device type (IOS, Mac, Windows and Chrome)
- Attain visibility into all app and software activity, including website access

Why CatchOn?



Invest Wisely

Evaluate software renewals with actual usage and financial data, not surveys.



Inform Training

Identify which apps need more training for your teachers to be successful.



Improve Usage

Ensure that important classroom apps are being used effectively across campus.



Spot Trends

Discover what free or unapproved apps are being used that can improve learning.

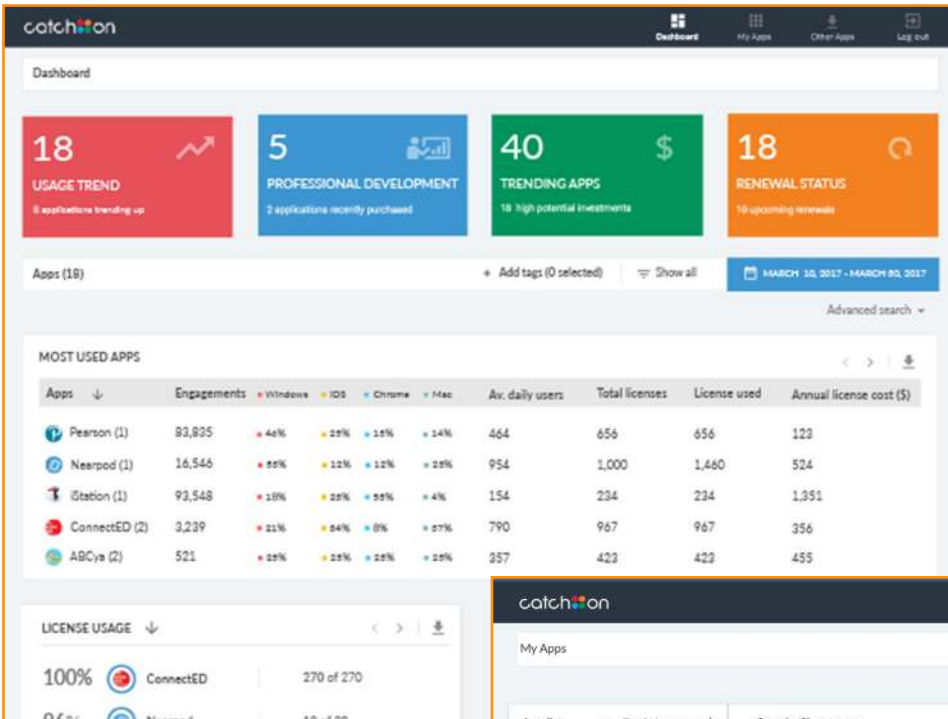
The Power of Visibility

Do you know all the applications your schools are using?
Do you know how they are being used?

MOST USED DIGITAL TOOLS								
Digital Tools ↓	Total Licenses	Users	Schools	Engagement	iPad	Mac	Win	Chrome
Pearson	656	464	4	83,835	46%	25%	15%	14%
Nearpod	1,000	954	5	16,546	53%	12%	12%	23%
iStation	234	154	3	93,548	18%	23%	55%	4%
ConnectED	967	790	5	3,239	21%	34%	8%	37%
ABCya	423	357	2	521	25%	25%	25%	25%

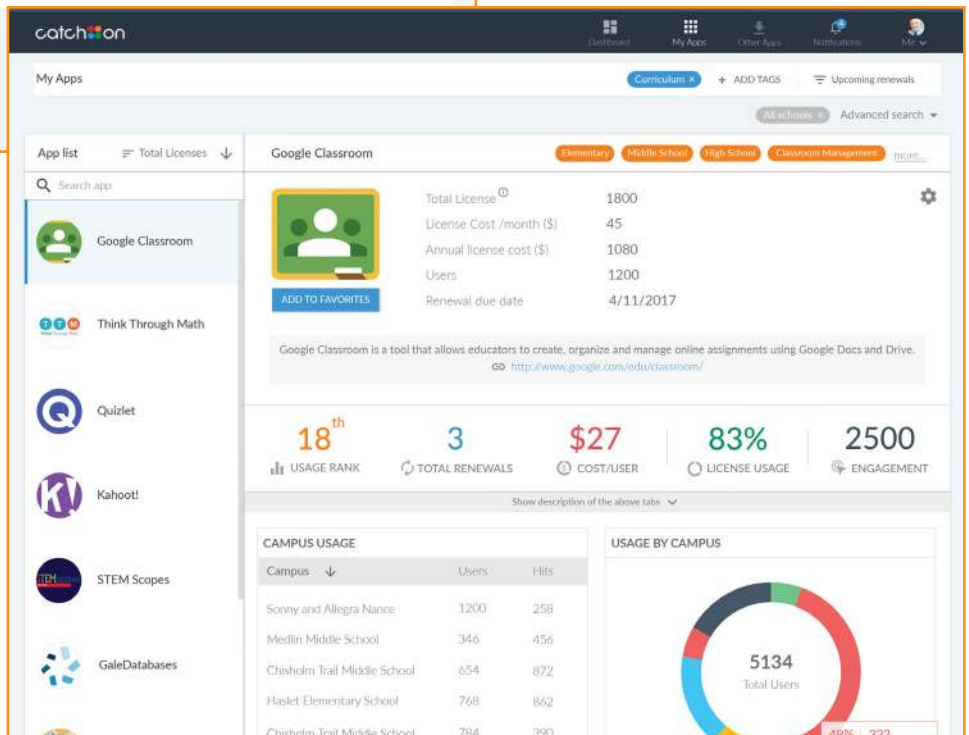
“Over the last few years, we have deployed thousands of devices within our district. We needed a way to track what tools and applications our students and teachers are using on those devices to optimize and safeguard our learning environments. CatchOn provides us with actionable information we can use to make data-informed decisions, identify trends, and inform professional practices.”

Jeremy Bunkley, Director of Information Services, School District of Clay County, Florida



Admin Dashboard

Optimize digital budgets by using real-time data for managing licenses. Learn what OERs and other non-licensed tools are used on each campus or within grade and subject levels.



App Analysis

See statistics on every tool that your district uses. CatchOn's technology analyzes your data in order to help you identify trends over time as well as usage gaps.

CONTACT US TODAY!

For more information about CatchOn, contact your ENA account service manager or visit our website at www.ena.com.

General Inquiries: 866-615-1101 | info@ena.com

Support: 888-612-2880 | support@ena.com



Education Networks of America

ABOUT ENA

Education Networks of America (ENA) delivers transformative technology solutions supported by exceptional customer care to education and library institutions across the nation. Since 1996, we have worked with our customers to design and engineer high-capacity and future-ready broadband, Wi-Fi/LAN, communication, cloud, and security solutions. For more information, please visit www.ena.com, call 866-615-1101, or e-mail info@ena.com.