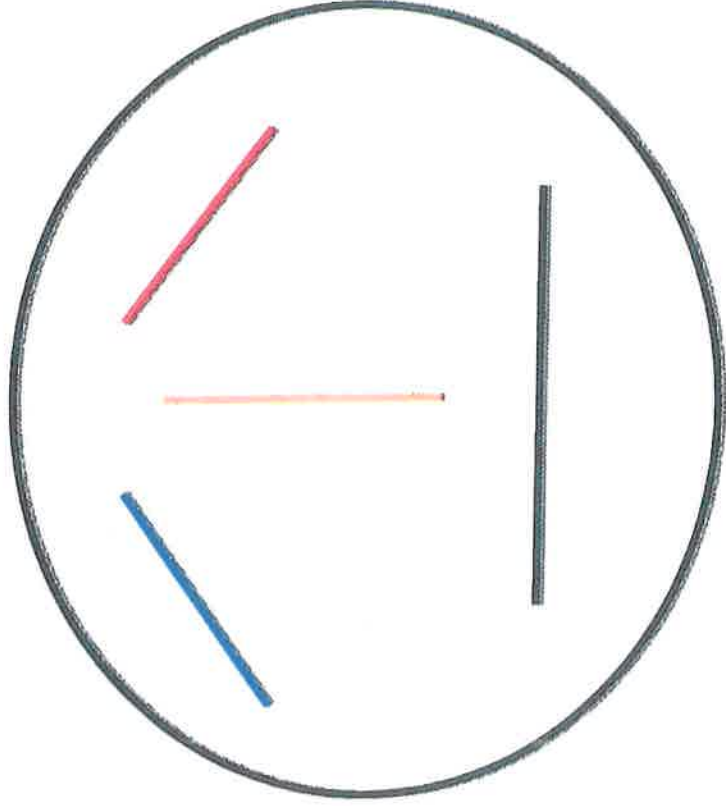


Reporting Category 2: Describing and Graphing Linear Functions, Equations, and Inequalities

- A.3(A) Determine the Slope of a line given a table of values, a graph, two points, and an equation in various forms
- A.4(C) Write, with and without technology, linear functions that provide a reasonable fit to data to estimate solutions and make predictions for real world problems

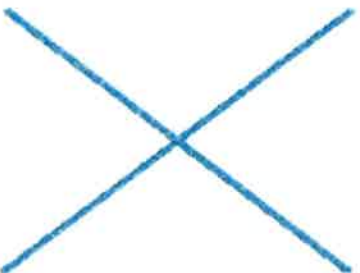


Reporting Category 2: Describing and Graphing Linear Functions, Equations, and Inequalities

A.3(F) and A.3(G) Graph systems of two linear equations in two variables on the coordinate plane & determine solutions if they exist; estimate graphically the solutions to systems of two linear equations with two variables in real – world problems.



0

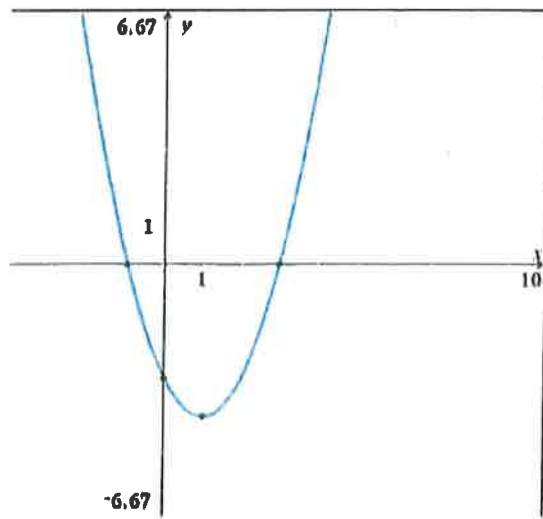
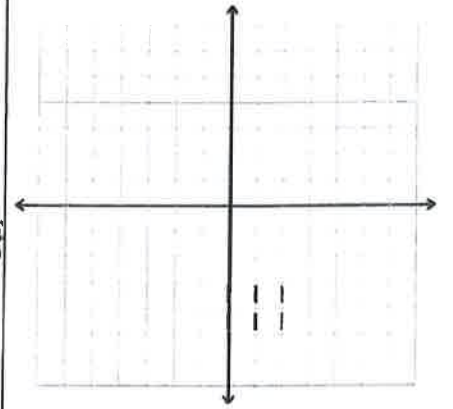
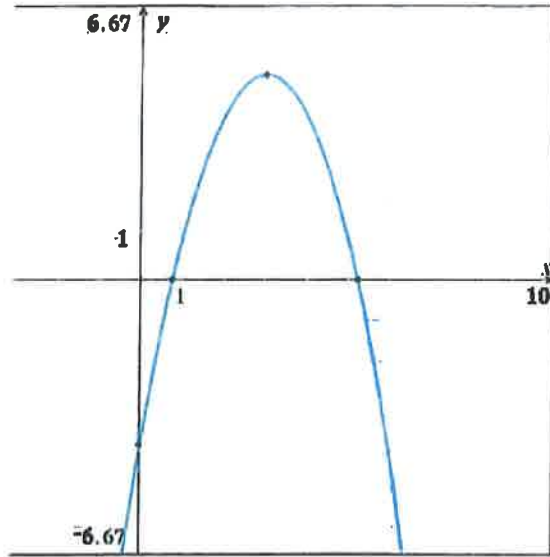


1



∞

Characteristics of Quadratic Function Graphs



Reporting Category 3: Writing and Solving Linear Functions, Equations, and Inequalities.

A.5(A) Solve linear equations in one variable, including those for which the application of the distributive property is necessary and for which variables are included on both sides.

A.5(C) Solve systems of two linear equations with two variables for mathematical and real-world problems.

Reporting Category 1: Number and Algebraic Methods

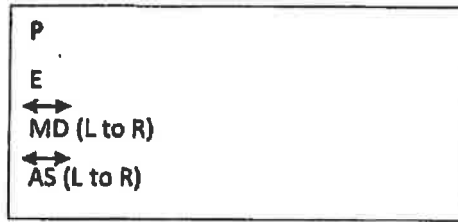
A.10(E) Factor, if possible, trinomials with real factors in standard form

Reporting Category 4: Quadratics

A.8(A) Solve quadratic equations having real solutions

1E	2E	Q
M	M	M
3	3	3
1	2	3

PEMDAS or



AAS

ASA

FOIL

VEF

DR. PEPPER

King
Henry
Doesn't
Usually
Drink
Chocolate
Milk

Dead
Meat
Smells
Bad

Please
Excuse
My
Dear
Aunt
Sally

Cowboy
Horse

Daddy
Mommy
Sister
Brother
Cousin