



- ▶ New Enrollment Collection:
Oct. 23 – Nov.10, 2017
- ▶ Last Date for Test Administrator Training:
March 16, 2018
- ▶ Preview Window:
March 19-30, 2018
- ▶ Assessment Window:
April 2-20, 2018
- ▶ Verification Window:
April 23 & 24, 2018
- ▶ All key STAAR Alternate 2 dates are referenced in the Test Administrator Manual (TAM) & District and Campus Coordinator Manual (DCCM)

© 2017 Region One Education Service Center, School Improvement, Accountability and Compliance



STAAR Alternate 2 Verification Window

- ▶ The verification window for STAAR Alternate 2 is:
April 23 - April 24, 2018.
The window closes at 7 p.m. (CST) on April 24.
- ▶ The verification window is intended to ensure the accuracy and completeness of all data submitted in the Assessment Management System and the collection of secure documents.
- ▶ If during the verification process it is realized that a student has not been tested, then the student must be tested during the verification window.
- ▶ If during the verification process it is realized that a student's data has been omitted, the data should be entered during the verification window.

© 2017 Region One Education Service Center, School Improvement, Accountability and Compliance





Students Who Enroll **AFTER** April 2, 2018

- ▶ Students who transfer/move to a **new district** after the first day of the STAAR Alternate 2 testing window **do not have to be tested.**
- ▶ Students who transfer within the **same district** after the first day of the STAAR Alternate 2 testing window **still must be tested by the district where the student is enrolled.**





► COLOR STUDENT BOOKLETS

- Spring 2018: Introduced for the first time
- 2018 will have limited color images
- Exit survey will be utilized to gauge test administrator satisfaction with color format
- TEA will analyze the impact of new format on student performance

© 2017 Region One Education Service Center, School Improvement, Accountability and Compliance



► LARGE PRINT STUDENT BOOKLETS

- Spring 2018: Introduced for the first time
- Ordered through the enrollment collection process
- Districts must enter a number to receive large print tests. The count in the Assessment Management System will default to zero
- Number of large print booklets ordered should be based on students who require an accommodation of enlarged text or images

© 2017 Region One Education Service Center, School Improvement, Accountability and Compliance

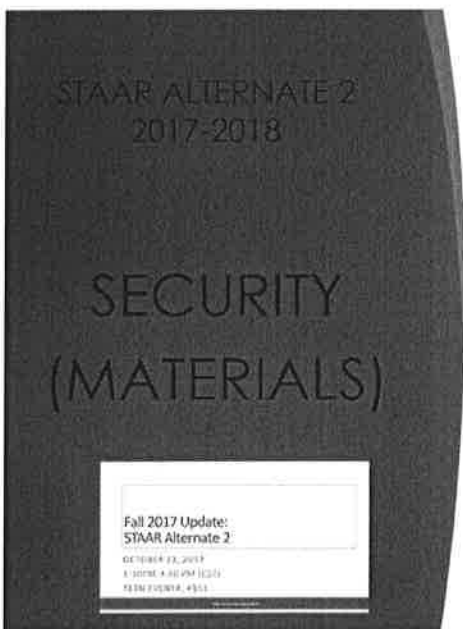




► STAAR Alternate 2 Exit Survey

- Found in the Assessment Management System
- Completed upon submission of all student responses
- Final submit button will prompt the survey link
- Survey results will guide the test features of future STAAR Alternate 2 development

© 2017 Region One Education Service Center, School Improvement, Accountability and Compliance



Materials to be provided to STAAR Alternate 2 test administrators per student include:

- one student booklet
- one image card set
- one scoring document*
- one secure STAAR Alternate 2 Test Administrator manual for each grade, subject, or course tested

Return used and unused:

- secure STAAR Alternate 2 Test Administrator manuals
- student booklets
- scoring documents
- complete image card sets
- photocopies of secure test materials

*scoring document may be found in back of TAM or online through "Resources" tab in Assessment Management System

© 2017 Region One Education Service Center, School Improvement, Accountability and Compliance

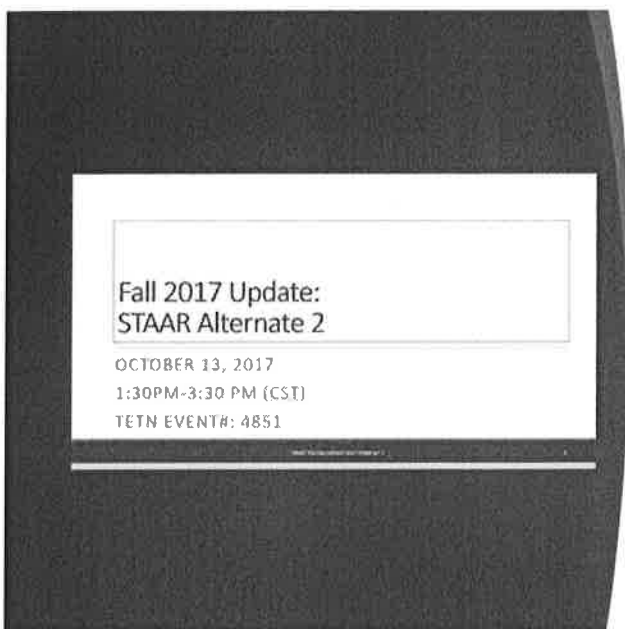




Translated Student Materials

- New field
- Test Details screen in the Assessment Management System (above the score code and accommodation fields)
- Field collects data on the number of STAAR Alternate 2 assessments being translated into a language other than English
- The default is "NO"
- New field will also be added to STAAR Alternate 2 Scoring Document so that it matches new field in online form

© 2017 Region One Education Service Center, School Improvement, Accountability and Compliance



STAAR ALTERNATE 2 RESOURCES REVISED



Revised Medical Exception Form



State Required Form

STAAR ALTERNATE 2 MEDICAL EXCEPTION ELIGIBILITY REQUIREMENTS

Student Name _____ Grade _____ Date _____
 Name of District Personnel Completing Form _____ Position _____

ELIGIBILITY CRITERIA
 If the admission, review, and district (ARD) committee has previously determined that a student meets the eligibility criteria for STAAR Alternate 2 and the student is being considered for a medical exception designation, the ARD committee must discuss the eligibility criteria below. At least one of the specific medical conditions listed below should describe the medical condition of the student. Additionally, the ARD committee must discuss the three assurances. All of these assurances must be initiated by district personnel in order for the student to receive a medical exception. Students qualifying for a medical exception will not be required to participate in the administration of STAAR Alternate 2 for any course or subject for which they are exempt in the current year. A score code of 99 must be recorded for all tests the student would have taken.

Specific Medical Conditions Eligibility Criteria

- Unable to make it required to hear questions due to a terminal or degenerative illness
- The student is receiving instruction from personnel designated for a medical emergency or serious injury in an accident.
- The student is unable to interact with peers or educators without risk of infection or contamination to her/himself or others.
- The student is unable to receive sufficient or consistent homebound services due to medical issues.

Dispute and Final Assurances
 If the medical condition of the student is described by at least one of the eligibility criteria, the ARD committee must discuss the following assurances. All three assurances must be initiated by district personnel for the student to be eligible for the STAAR Alternate 2 medical exception. The ARD committee must ensure the medical exception is documented in the student's individualized education program (IEP), and this form must be included in the IEP.

The medical incident or condition must prevent the student from participating in sufficient instruction offered at school, at home, at a hospital, or at a residential facility.

The information used to make the medical exception determination must reflect the student's current just prior to and throughout the testing window.

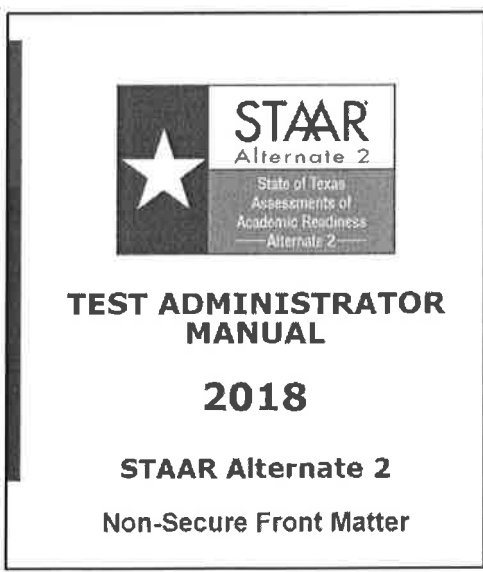
The medical incident or condition must be identified and verified in writing by a licensed physician and kept on file by the local district.

Revised form:

- No longer "chronic illness"
- Revised version: "terminal or degenerative illness"



Revised Medical Exception Form



Revised manual:

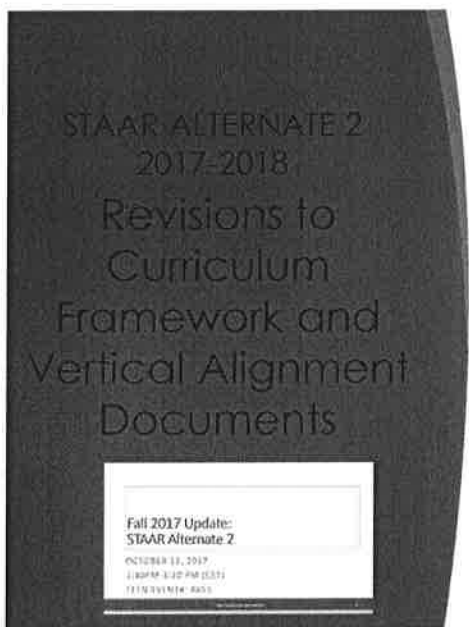
- No longer non-academic homebound services due to medical issues and does not receive academic instruction
- Revised form: "unable to receive sufficient or consistent homebound services due to medical issues."



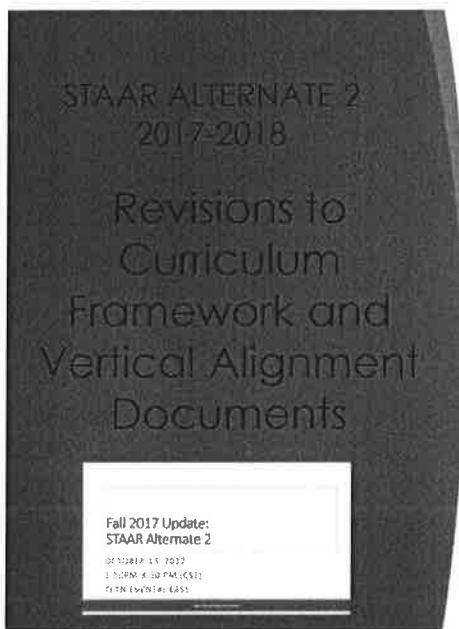


Revisions to Vertical Alignment and Curriculum Framework

- ▶ **Math grade 4, RC3, 4.7, page 22:**
- ▶ Added PK skill V.E.1
- ▶ **Classification and patterns skills**
- ▶
 - sort objects that are the same and different into groups and use language to describe how the groups are similar and different



- ▶ **Math grade 8, RC3, 8.8, page 25-26:**
- ▶ Added K.7.A and K.7.B
- ▶ **Measuring Length, Area, Volume, and Weight/Mass**
- ▶
 - compare two objects with a common measurable attribute to see which object has more of/less of the attribute and describe the difference
 - give an example of a measurable attribute of a given object, including length, capacity, and weight
- ▶ Added PK skill V.E.1
- ▶ **Classification and patterns skills**
- ▶
 - sort objects that are the same and different into groups and use language to describe how the groups are similar and different



- ▶ Algebra RC4, A.6, page 26; RC4 A.7, page 29; RC4, A.8, page 34; and RC5, A.9, page 39:
- ▶ Added 6.7A
- ▶ *Determining and Simplifying Numeric and Algebraic Expressions*
- ▶ • generate equivalent numerical expressions using order of operations, including whole number exponents and prime factorization

© 2017 Region One Education Service Center, School Improvement, Accountability and Compliance



STAAR Alternate 2 Student Report Card

- Formerly known as “Confidential Student Report”
- The individual student report card will show performance data for each student on the subject-area tests
- **Resources will be included for parents of students with significant cognitive disabilities**
- More specific details will be sent out through email communication in the Spring.

© 2017 Region One Education Service Center, School Improvement, Accountability and Compliance





- STAAR Alternate 2 assessments are administered in the subject/course in which the student is enrolled.

Grade 3	mathematics and reading
Grade 4	mathematics, reading, and writing
Grade 5	mathematics, reading, and science
Grade 6	mathematics and reading
Grade 7	mathematics, reading, and writing
Grade 8	mathematics, reading, science, and social studies
EOC	Algebra I, English I, English II, biology, and U.S. history

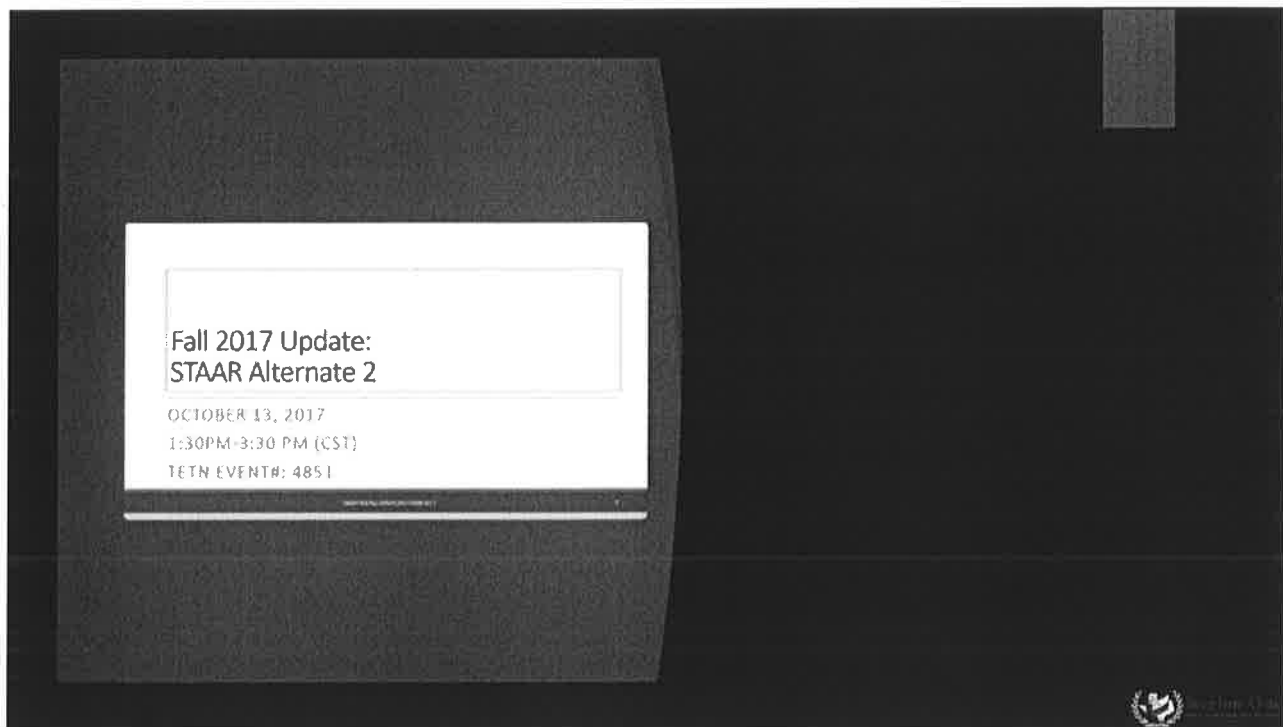
- Above grade testing is not allowed on STAAR Alternate 2 (for example, students who are enrolled in 8th grade taking STAAR Alternate 2 may not be assessed in Algebra I in 8th grade)
- Students who meet eligibility for STAAR Alternate 2 would be not have an instructional level that would allow for above grade instruction.

(Change of language will be reflected in 18-19 Participation Requirements)



Web postings

- **STAAR Alternate 2 Educator Guide**
- **Revised Medical Exception Eligibility Requirements (English & Spanish)**
- **Instructional Terms Lists**
- **Essence Statements: Oct. 20**
- **STAAR Alternate 2 Test Blueprints: Oct. 20**



STAAR ALTERNATE 2
2017-2018

ESSA
IMPLICATIONS FOR
ELIGIBILITY

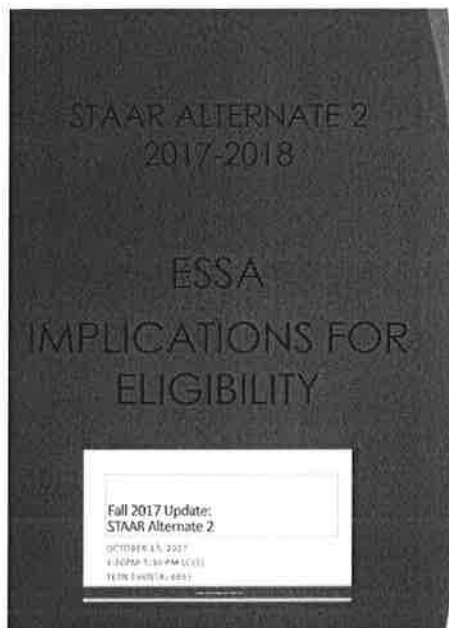
Fall 2017 Update:
STAAR Alternate 2
OCTOBER 13, 2017
1:30PM-3:30 PM (CST)
TETN EVENT#: 4851

Previous 1% Rule

- ▶ No Child Left Behind (NCLB) stated that all students in public schools must be included in the statewide accountability system and defined alternate assessments as appropriate for the **most significantly cognitively disabled (MSCD)** students.
- ▶ NCLB put parameters around the definition and on the number of MSCD students who can be counted as proficient in a state's adequate yearly progress (AYP) calculations.

© 2017 Region One Education Service Center, School Improvement, Accountability and Compliance

Region One
EDUCATION SERVICE CENTER
"Where We Lead"



Reauthorization of ESEA

- Elementary and Secondary Education Act of 1965 (ESEA) amended
- enacted December 2015
- Every Student Succeeds Act (ESSA):

In an effort to make assessments ... inclusive of all students, the ESSA imposed a cap to limit, to 1.0 percent of the total number of students who are assessed in a State in each assessed subject, the number of students with the most significant cognitive disabilities whose performance may be assessed with an alternate assessment aligned with alternate academic achievement standards

§ 200.6(c) ALTERNATE ASSESSMENTS ALIGNED WITH ALTERNATE ACADEMIC ACHIEVEMENT STANDARDS (AA-AAAS)

Revised 1% Rule: The total number of students assessed using AA-AAAS may not exceed 1.0% of the total number of students in the State who are assessed in a subject.

Currently in Texas: The **average** number of students assessed using AA-AAAS is around 1.24% of the total number of students in the State who are assessed in a subject.

§ 200.6(c) ALTERNATE ASSESSMENTS ALIGNED WITH ALTERNATE ACADEMIC ACHIEVEMENT STANDARDS (AA-AAAS) - Waiver Request

- ▶ As a result, Texas is seeking a waiver from this requirement pursuant to section 8401(b) of the ESEA, as amended by the ESSA. Specifically, Texas is requesting a limited waiver of section 1111(b)(2)(D)(i)(I), of the ESEA, as amended by the ESSA, so that the state's assessment system may have slightly more than 1.0 percent of students taking the AA-AAAS during the 2017–2018 school year.

© 2017 Region One Education Service Center, School Improvement, Accountability and Compliance



STAAR ALTERNATE 2
2017-2018

WAIVER
REQUEST FOR
STAAR
ALTERNATE 2

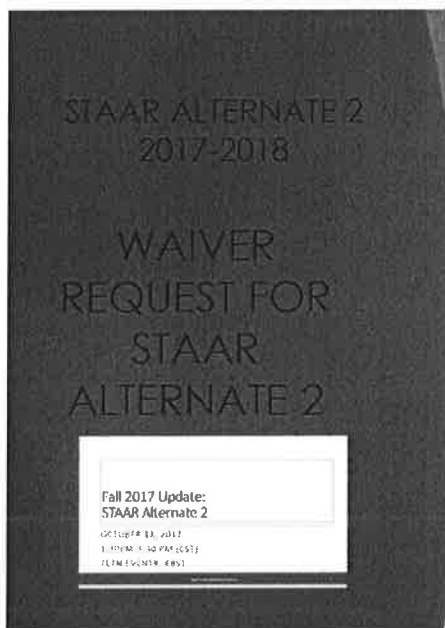
Fall 2017 Update:
STAAR Alternate 2

OCTOBER 19, 2017
1:05PM-3:30 PM (EST)
11M F4 (578 485)

- A **state may not prohibit** a district from assessing more than 1.0 percent of its assessed students with an AA-AAAS.
- In order to complete the waiver request, LEAs will be required to submit information justifying the need of the LEA to assess more than 1.0% of its assessed students with STAAR Alternate 2.
- LEAs will provide assurances that each LEA that will assess more than 1.0% of students using an AA-AAAS has followed all State guidelines and that each LEA will address any subgroup disproportionality in the percentage of students taking an AA-AAAS.
- States will make the information submitted by an LEA publicly available.

© 2017 Region One Education Service Center, School Improvement, Accountability and Compliance





How to submit:

- 10/20/2017: LEAs will receive a letter of notification indicating that based on 2016-2017 data the LEA assessed more than 1.0 percent of its assessed students with STAAR Alternate 2.
- 10/20/2017: Waiver document will be posted to the STAAR Alternate 2 Webpage.
- 11/17/2017: Districts complete waiver document and submit to TEA signed and dated by the Superintendent of the school district or the Chief Administrative Official of the charter school.
- Notification letter will list the unique email address to be used for submission of waiver document

© 2017 Region One Education Service Center, School Improvement, Accountability and Compliance



2018-2019 REVISED Participation Requirements

- As part of the waiver process, TEA will be updating its participation guidelines for STAAR Alternate 2.
- Developed based on input from STAAR Alternate 2 Advisory Council, TEA Special Populations division, Special Education experts in the field
- Effective upon release (December, 2017) to be used for Spring, 2019 ARD assessment decisions
- Training for the revised participation requirements will be provided to LEAs

© 2017 Region One Education Service Center, School Improvement, Accountability and Compliance

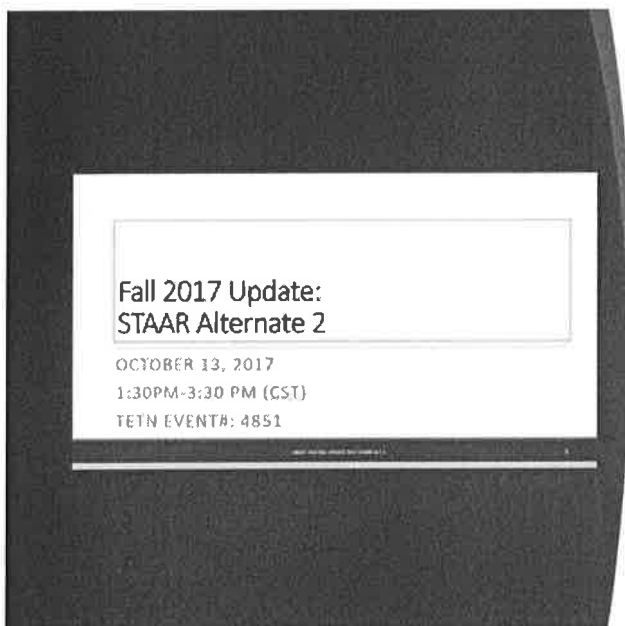




2018-2019 Flow Chart to Accompany Participation Requirements

- Developed based on input from STAAR Alternate 2 Advisory Council, TEA Special Populations division, Special Education experts in the field
- Effective upon release (December, 2017) to be used for Spring, 2019 ARD assessment decisions
- Flow chart is a simple graphic to help understand the new participation requirements
- Flow chart intended to help parents understand eligibility for STAAR Alternate 2

© 2017 Region One Education Service Center, School Improvement, Accountability and Compliance



Alternate English Language Proficiency Assessment





§ 200.6(h) ENGLISH LANGUAGE PROFICIENCY (ELP) TESTS

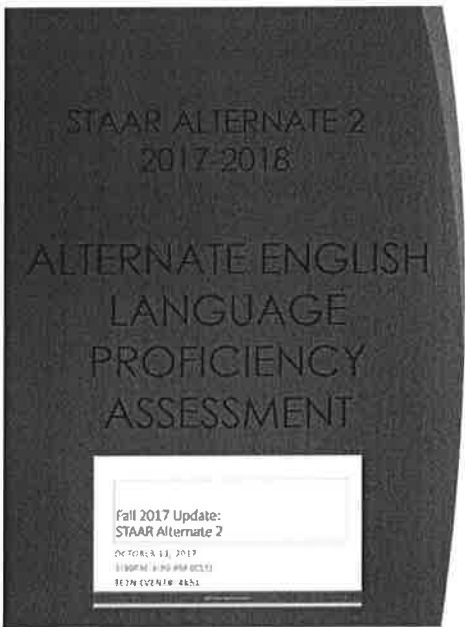
If one of the o



on one
e is no
assess
ased

ot
(ment)

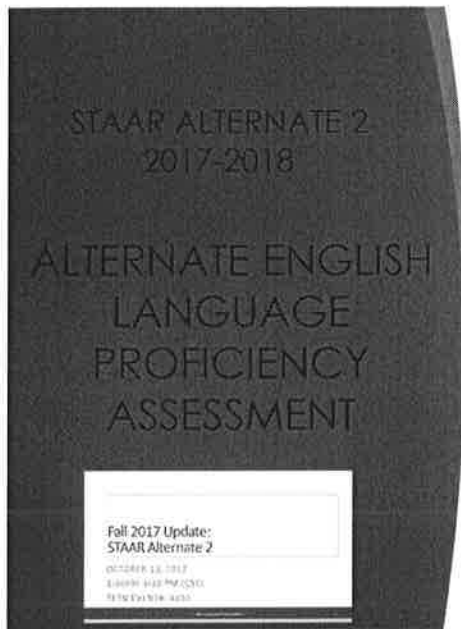
A State must provide an alternate assessment for English learners with significant cognitive disabilities who cannot participate in the ELP test even with appropriate accommodations.



Each State must

- develop a uniform, valid, and reliable statewide assessment of English language proficiency, including reading, writing, speaking, and listening skills; and
- require each LEA to use such assessment to assess annually the English language proficiency, including reading, writing, speaking, and listening skills, of all English learners in kindergarten through grade 12 in schools served by the LEA.





Each State's language proficiency assessment must

- be aligned with the State's English language proficiency standards and
- provide coherent and timely information about each student's attainment of the State's English language proficiency standards

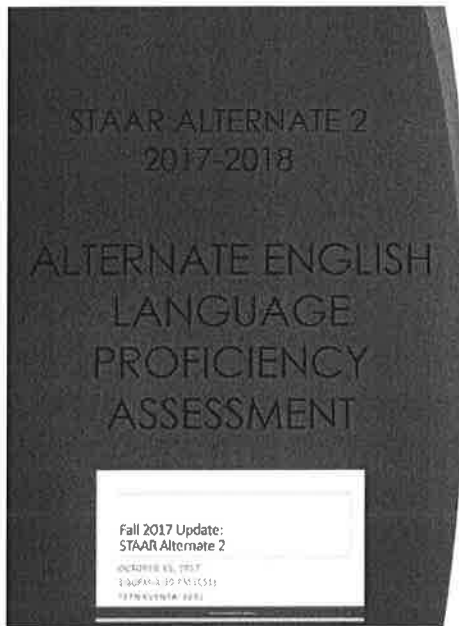
© 2017 Region One Education Service Center, School Improvement, Accountability and Compliance



- ▶ Texas is creating a holistic inventory to assess English language proficiency
 - to satisfy the Alternate ELP assessment requirement for students with the most significant cognitive disabilities (SWMSCD)
 - to reduce exemptions from specific language domains on the general TELPAS

© 2017 Region One Education Service Center, School Improvement, Accountability and Compliance

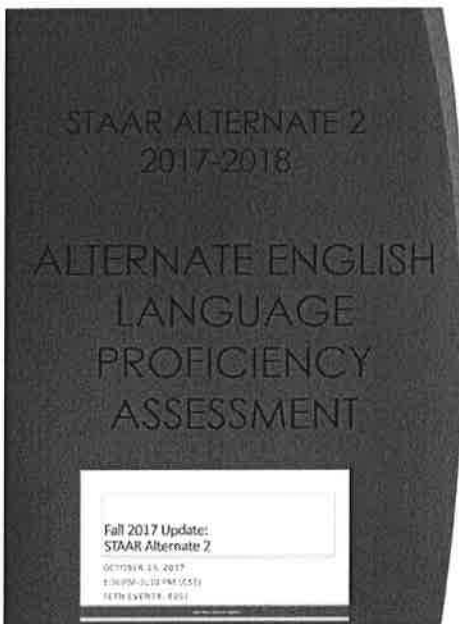




► Why a Holistic Inventory?

- Sensitive to the needs of SWMSCD
 - More accessible to students who have difficulty interacting with test items even with appropriate modifications and accommodations applied.
- Limit additional burden on the field
 - HB 5, 83rd Legislative Session, 2013
- Common form of evaluation used by special educators
 - Speech language inventories, adaptive behavior inventories, etc.

© 2017 Region One Education Service Center, School Improvement, Accountability and Compliance



► Holistic Inventory

- The inventory requires test administrators, based on their knowledge of a student's English language skills over a period of time
 - to make holistic judgments,
 - across all four domains of English language proficiency (listening, speaking, reading, writing), and
 - using alternate ELP-aligned rubric.

© 2017 Region One Education Service Center, School Improvement, Accountability and Compliance



Projected Participants

Grades K-1

- Since all ELs will take the same K-1 holistically-rated assessment for all 4 language domains, no eligibility determination is needed.

Grades 2-12

- Grade 2: Participation requirements will be created (similar to STAAR Alternate 2) and ARD/LPAC committees will be required to make an assessment determination for TELPAS.
- Grades 3-12: Participation requirements will be ELs who are eligible to take STAAR Alternate 2 will take the Alternate TELPAS.

- ▶ **2016 data:** approximately 4,590 students identified as limited English Proficient (LEP) took STAAR Alternate 2 in grades 3-EOC.
- ▶ A very small number of students who meet the requirements of No Authentic Academic Response (NAAR) or Medical Exceptions (ME) will not participate in either TELPAS (K-1) or the Alternate TELPAS (2-12).
- ▶ Alternate eligibility will be a new requirement for ARD/LPAC committees to decide prior to Spring 2019 of a student's 2nd grade year.

© 2017 Region One Education Service Center, School Improvement, Accountability and Compliance

STAAR ALTERNATE 2
2017-2018

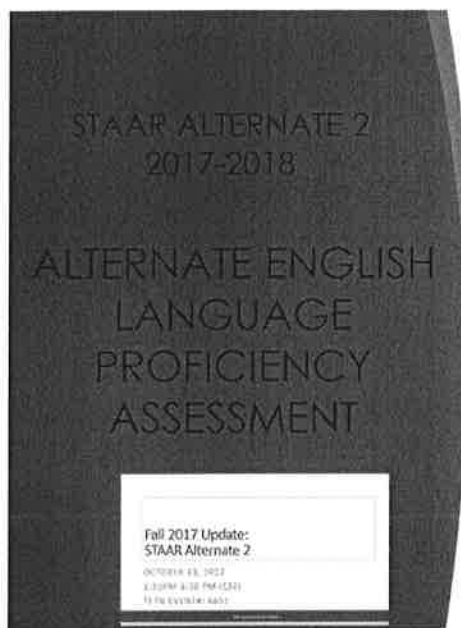
ALTERNATE ENGLISH
LANGUAGE
PROFICIENCY
ASSESSMENT

Fall 2017 Update:
STAAR Alternate 2
OCTOBER 18, 2017
2:30PM-3:30 PM (EST)
18114VENTN14-0002

▶ Draft Alternate PLDs

- ▶ Reason for alternate proficiency level descriptors (PLDs)?
 - Due to a significant cognitive disability, the current advanced or advanced high levels would be unattainable for SWMSCD because general TELPAS PLDs are aligned with grade-level expectations.
 - In order to provide meaningful data for teachers, the alternate PLDs will be a more meaningful measurement of English language proficiency for SWMSCD.
 - Five English language proficiency levels
 - Spring/Summer educator groups will provide further feedback on alternate PLDs

© 2017 Region One Education Service Center, School Improvement, Accountability and Compliance

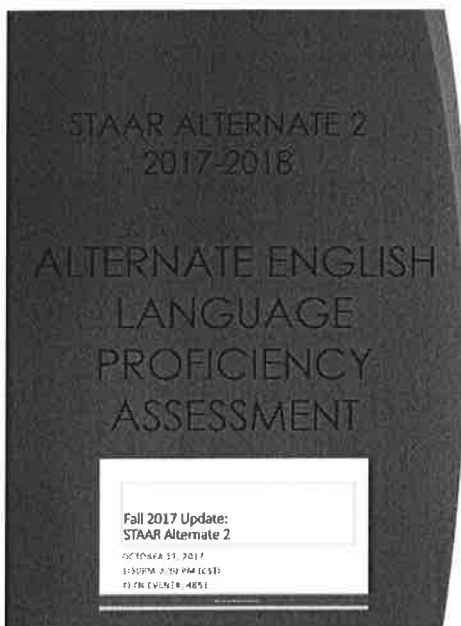


► Cognitive Lab – Late Spring 2018

► Purpose:

- Means of measuring TEST ADMINISTRATORS' mental processes through the use of a think aloud protocol
- Flexible procedure that can be catered to the specific situation and activity for unique student populations
- Gather data to inform development of observation criteria

© 2017 Region One Education Service Center, School Improvement, Accountability and Compliance



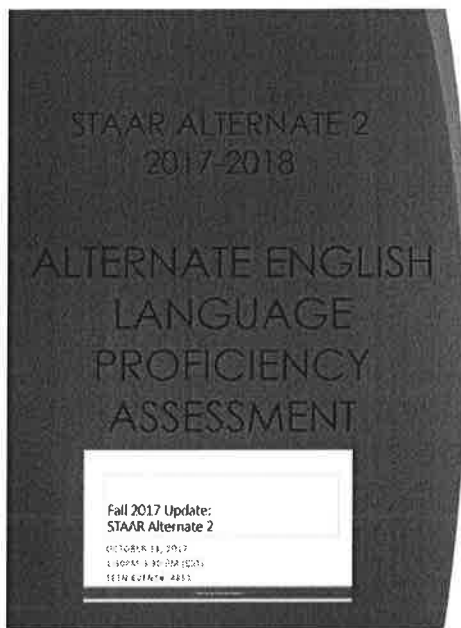
► Cognitive Lab – Late Spring 2018

► Procedure:

- **Robust participation by LEAs will help to combat small sample size of students**
- LEAs volunteer test administrators who are familiar with ELs who are also assessed with STAAR Alternate 2
- Test administrators conduct a sample holistic inventory with a reduced number of indicators
- TEA/Pearson staff conduct interview sessions with test administrators

© 2017 Region One Education Service Center, School Improvement, Accountability and Compliance

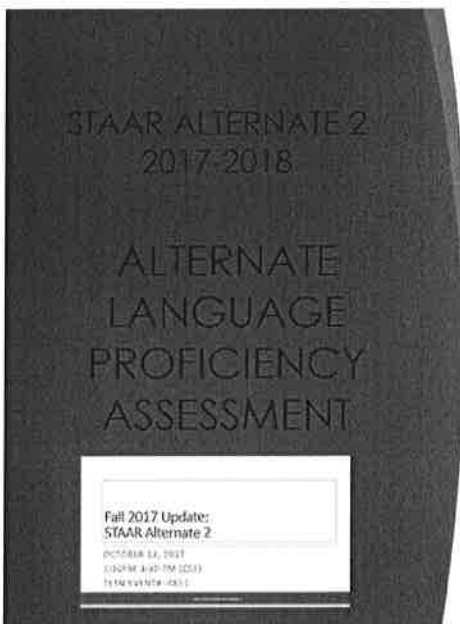




► Intended Outcomes

- Real-time observation of student interactions with item types and the accommodations that are required
- Collection of valuable educator knowledge of unique needs of student population to inform the test content and procedures
- A cadre of test administrators who will help guide the alternate language proficiency assessment development process required for ELs with significant cognitive disabilities.
- Results that inform implications for future testing of ELs with significant cognitive disabilities
- Protocol that will inform assessment and instruction of ELs with significant cognitive disabilities

© 2017 Region One Education Service Center, School Improvement, Accountability and Compliance



► How to Apply?

LEAs will receive a letter from TEA soliciting districts to participate in the cognitive lab:

- including the proposed calendar for completing cognitive lab activities and
- describing the procedures for districts who will volunteer to participate.

Thank you for your participation in this exciting opportunity to inform Texas' first language proficiency assessment created specifically for ELs with significant cognitive disabilities!

© 2017 Region One Education Service Center, School Improvement, Accountability and Compliance



Educator Committees

We need you to nominate qualified educators from your school or district, to serve on statewide committees who will review test questions or participate in other test development activities related to the state assessments.

A great way to inform test development for students with significant cognitive disabilities!

© 2017 Region One Education Service Center, School Improvement, Accountability and Compliance



► Go to:

- <http://tea.texas.gov/student.assessment>
- Click on Student Assessment A-Z Directory
- Scroll down and
- Click on Educator Committees
- Complete online form

TEA
Texas Education Agency

Recommendations for Educator Committees
Student Assessment Division

Input from Texas educators is a critical component of ensuring that the state assessments developed by the Student Assessment Division of the Texas Education Agency (TEA) are valid, reliable, high quality measures of student achievement. Please use this form to nominate qualified educators from your school or district to serve on statewide committees who will review questions or participate in other development activities related to the state assessments listed below:

- State of Texas Assessments of Academic Readiness (STAAR)
- STAAR Spanish
- STAAR Alternate 2
- Texas English Language Proficiency Assessment System (TELPAS)

Enter the name and email address of the Supervisor making the recommendation below.
(You will be prompted later in this form to enter Nominee information)

*First Name:

*Last Name:

*Email Address:

Fall 2017 Update:
STAAR Alternate 2
OCTOBER 13, 2017
1:10PM - 1:40 PM (CST)
TEA/ESCC/ESC/ESC

